



# Product Brochure

*Saving Energy Worldwide...one PSI at a time™*

# Air Knives and Air Nozzles

## XE (eXtra Efficiency)

- **Inlet Diameter:** 2" – 3" – 4" – 6"
- **Length:** 2" – 144" (50.8 mm – 3557.6 mm)
- **Material Options:** Aluminum (AL), Stainless Steel (SS), Carbon Steel (CS)
- **Finish Options:** Hard Anodized (HA), Electro-Polish (EP), Zinc & Powder Coat (ZP)

### Available With:

- Ferrules
- NPT
- Flexible Nozzles
- Multiple Inlet locations



## Static Control with Ionizing Bars

- **Inlet Diameter:** 2" – 3"
- **Length:** 2" – 84" (50.8 mm – 2133.6 mm)
- **Material Options:** Aluminum (AL), Stainless Steel (SS)
- **Includes Anti-Static Ionizing Bars & Power Supply**
- 115 V or 230 V Input/24 V DC Output



## Rotary (Patented)

- **Inlet Diameter:** 3" Ferrule with Quick Release Tri-Clamp
- **Length:** 12" – 36" (304.8 mm – 914.4 mm)
- **Material Options:** Stainless Steel (SS), Aluminum with Bolt-on Inlet
- **Rotational Speed:** 10 - 200 RPM (self-propelled)



## Nozzles

- **Inlet Diameter:** 2", 3" & 4"
- **Outlet Diameter:** 0.50" – 4.00"
- **Material Options:** Stainless Steel (SS), Rubber, ABS



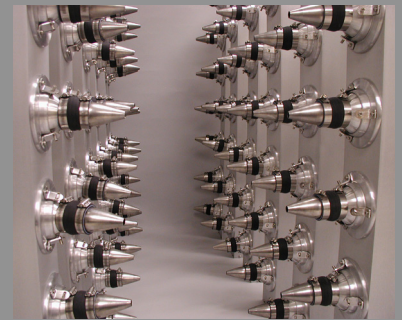
## Sanitary CIP

- **Inlet Diameter:** 3"
- **Length:** 2" – 72" (50.8 mm – 1828.8 mm)
- **Material:** 300 Series Stainless Steel (SS)
- Compliant with 3-A Sanitary Standards for Cleanability



## Nozzle Manifolds Made to Order

- **Inlet Diameter:** 4", 6"
- **Length:** 6" – 120" (152.4 mm – 3048 mm)
- **Material Options:** Aluminum Square Tubing w/SS Nozzles
- **Options:** Pneumatic Reciprocation



## Wire Dryer - Modular

- **Inlet Diameter:** 3" or 4"
- **Wire Diameter:** .01" – 6" (.254 mm – 152.4 mm)
- **Length:** 12" – 24" – 36" (304.8 mm – 609.6 mm – 914.4 mm)
- **Material:** UHMW Enclosure
- **Production Rates:** 100 – 3,000 FPM (30.48 MPM – 914.4 MPM)
- Internal Wire Guides
- **Options:** Pneumatic Opening



## Mounting Brackets

- **Material:** Aluminum/ Mounting Blocks w/SS Tubing
- Modular Single Posts for Air Knives, Nozzles or Tubing
- Modular Dual Post for Air Knives, Nozzles or Tubing
- **Optional:** Quick Release Handles





# Blowers

## SONIC 70 – 150

- **Output Flow Rate:** 50 – 1,100 CFM (1.415 CMM – 31.148 CMM)
- **Pressure:** 0.5 – 4.2 PSIG (3.447 KPA – 28.958 KPA)
- **HP:** 3 – 25 (2.23 kW – 18.64 kW)
- **Dimensions:** 20" – 26" L x 10" – 18" W x 22" – 32" H (508 – 660.4 mm L x 254 – 457.2 mm W x 558.8 – 812.8 mm H)
- **Weight:** 108 lbs – 406 lbs ( 48.98 – 184.15 kg)
- **Material:** Cast Aluminum
- **Outlet Diameter:** 3" or 4"
- **Voltage:** 190/380 V, 230/460 V, 575 V, 50/60 Hz, 3PH
- 18 Different Blower Outlet Configurations



## SONIC 200 – 300 (Dual Blower)

- **Output Flow Rate:** 1,000 – 2,200 CFM (28.316 CMM – 62.297 CMM)
- **Pressure:** 0.5 – 4.2 PSIG (3.447 KPA – 28.958 KPA)
- **HP:** 25 - 50 (18.64 kW – 37.28 kW)
- **Dimensions:** 31" L x 43" W x 18" H (787.4 mm L x 1092.2 mm W x 457.2 mm H)
- **Weight:** 685 lbs (310.71 kg)
- **Material:** Cast Aluminum
- **Outlet Diameter:** 4"
- 11 Different Blower Outlet Configurations



## SONIC 350

- **Output Flow Rate:** 1,000 – 3,500 (28.316 CMM – 99.108 CMM) CFM @ 3.5 PSIG (24.131 KPA)
- **HP:** 30 – 50 (22.37 kW – 18.64 kW)
- **Dimensions:** 32" L x 30" W x 60" H (812.8 mm L x 762 mm W x 1524 mm H)
- **Weight:** 1000 lbs ( 453.59 kg)
- **Material:** Steel
- **Outlet Diameter:** 6"
- 4 Different Blower Outlet Configurations



## Hydraulic

- **Output Flow Rate:** 50 – 2,200 CFM (1.415 CMM – 62.297 CMM)
- **Pressure/Vacuum:** 0.5 – 4.2 PSIG (3.447 KPA – 28.958 KPA)
- **HP:** 3 - 50 (2.23 kW – 37.28 kW)
- **Material:** Cast Aluminum
- **Outlet Diameter:** 3", 4" & 6"
- **Optional:** PTO, Engine Drive
- 18 Different Blower Outlet Configurations



## Hot Air Tank Dryer (Patented)

- **No Heater or Control Panel Required**
- **Model:** SONIC 70 - 150
- **Material:** SS Enclosure & Piping, Cast Aluminum Blower Body
- **Standard Outlet Temp:** > 160° F (71° C)
- **Optional:** Portable Push Cart
- **Includes:** HEPA Filter and Control Box
- **Energy Reduction:** 50% savings versus Blower with Heater
- **Temp Available up to 275° F (135° C)**



## Variable Temperature (Patented)

- **No Heater or Control Panel Required**
- **Outlet Temp:** 150° F – 275° F (65° C – 135° C)
- **Model:** SONIC 70 - 300
- **HP:** 10 – 50 (7.45 kW – 37.28 kW)
- **Material:** Cast Aluminum Blower
- **Optional:** Water Cooled version 160° F to 275° F (71° C – 135° C)
- **Energy Reduction:** 50% savings versus Blower with Heater



## Motor Starters/VFD/Controls

- Use: Magnetic Starters ideal for 3 HP – 7.5 HP (2.23 kW – 5.59 kW) motor protection from Overload
- Soft Starters from 10 HP – 50 HP (7.45 kW – 37.28 kW)
- Optional Pre-wired with Start/Stop 3-wire control and through-the-cover overload RESET.
- Easy to install and setup
- Enclosure NEMA 4X (IP56)



## Motor Control Panels

- Includes: Temperature Controller, Run Light, Start/Stop buttons, Temp Fault Light Tower, Main Switch Disconnect
- **Power:** 190/380 V, 230/460 V, 575 V, 50/60 Hz, 3PH
- NEMA – 5, 4X, 12 (IP52, IP56)
- **Option:** Variable Frequency Drive



## Preventive Maintenance Monitor

- Use: Provides continuous monitoring for any Sonic Blower assembly
- Monitors Blower Bearing temperature to alert high temperatures
- Monitor with two wire transmitter
- Reduces down time and maintenance costs
- 24 V DC or 110 V AC
- LED Controller 1/8 DIN



## Water Cooler – Hot Air Blowers (125°F – 400°F)

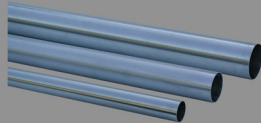
- **Size:** 4-Gal & 30-Gal (15.14 L – 113.56 L)
- **Material:** Stainless Steel
- **Water Connection:** 5/16"
- **Pump Capacity:** 1.40 GPM
- **Fluid:** Water or Propylene Glycol
- **Power:** 110 V or 230 V @ 1/6 HP 124 W



# Accessories

## Piping/ Elbows, Reducers & Y-Branches

- **Diameter:** 2" – 3" – 4" – 6"
- **Lengths:** from 6" to 96"
- **Material:** Stainless Steel, Zinc Plated Steel, ABS, & PVC

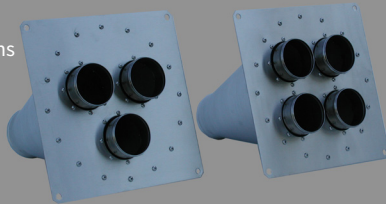


- **Diameters:** 2" – 3" – 4" – 6"
- **Material:** Stainless Steel, ABS, PVC
- EPDM Sleeve & Clamps
- Reducers
- 45°, 90° Elbows
- Y-Branches
- T-Dividers/Laterals



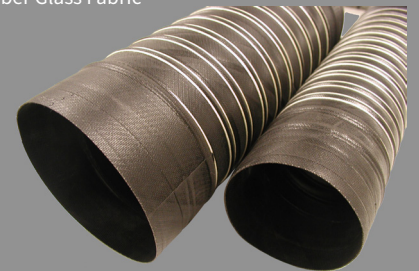
## Manifolds

- **Inlet Diameter:** 4" – 6"
- **Outlet Diameter:** 3" – 4"
- **Material:** Hard Anodized Aluminum, Stainless Steel
- **Models:** 3-Port – 8-port
- **Optional:** Ferrule Connections



## Flex Hose

- **Diameter:** 2" – 3" – 4" – 6"
- **Lengths:** 6" – 12ft
- **Material:** Neoprene Coated Fiber Glass Fabric
- **Temp Range:** -65° F – 300° F
- **Max Pressure:** 13 – 30 PSI
- **Options:** Food Grade, High Temp, Tank Dryer



## Valves - Butterfly, Check, and Gate

- **Size:** 2" – 3" – 4" – 6"
- **Material:** Anodized Aluminum, Stainless Steel & PVC



## Y-Verter - Pneumatic Air Diverter

- **Inlet Diameter:** 4" & 6"
- **Outlet Diameter:** 4" & 6"
- **Material:** Cast Aluminum & SS
- **Response Time:** < 1 Second
- **Max Air Pressure:** 90 PSIG
- **Options:** Solenoid Valve, ByPass Restrictor, ByPass Air Silencer



# Enclosures

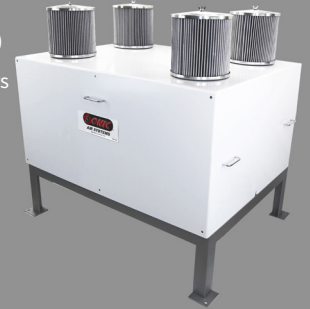
## SONIC 70 – 150 Blowers

- **Outlet Diameter:** 3" & 4"
- **Material:** Stainless Steel (SS)
- **Dimensions:** 33" L x 26" W x 52" H (838.2 mm L x 660.4 mm W x 1320.8 mm H)
- **Filtration:** 1 – 2 Paper or Poly Filters
- **Standard dB Level To:**  $\geq 80$  dB
- Removable Door for Maintenance
- **Options:** Weatherhoods for Washdown and Outdoor Environments
- For Noise Containment and Protection from Environment
- Additional Sound Reduction Available



## SONIC 200 – 300 Dual Blower

- **Outlet Diameter:** 4"
- **Material:** Polypropylene
- **Dimensions:** 38" L x 50" W x 37" H (965.2 mm L x 1270 mm W x 939.8 mm H)
- **Filtration:** 2 – 4 Paper or Polyester Filters
- **dB Level:**  $\leq 85$  dB
- **Options:** Weatherhoods for Washdown Environment
- For Noise Containment and Protection from Environment



## SONIC 350 Blower

- **Outlet Diameter:** 6"
- **Material:** Powder Coated Steel
- **Dimensions:** 51" L x 51" W x 63" H (1295.4 mm L x 1295.4 mm W x 1600.2 mm H)
- **Filtration:** 10 Micron Panel Filters
- **dB Level:**  $\leq 85$  dB
- For Noise Containment and Protection from Environment



## (Air Knife) SmartTunnel™

- **Modular Length:** 24" – 144" (609.6 mm – 3657.6 mm)
- **Inlet Diameter:** 3" – 4"
- **Material:** Stainless Steel (SS)
- Removable Door for Maintenance
- For Noise and Water Containment
- Assembles to Existing Conveyor
- 98% Water Containment
- Noise Reduction to as Low as 80 dB



# Filters

## Blower Inlet Filter/Silencer

- **Media:** Paper or Polyester (washable)
- **Flow Rate:** 900 CFM, 1200 CFM, 3500 CFM
- **Filtration Level:** 2 – 5 Micron
- **Finish:** Anodized Aluminum, Plated Steel, Stainless Steel
- **Optional:** Analog Gauge



## HEPA In-Line

- **Media:** 99.97% @ 0.3 Micron
- **Max Flow Rate:** 1,000 CFM
- **Material:** Aluminum
- **Finish:** Hard Anodized or Nickel Plated
- **Options:** High Temp up to 180° F (82° C), 6" diameter connections and electric gauge
- **Dimensions:** 40" L x 22" Dia x 31" H (1016 mm L x 558.8 mm W x 787.4 mm H)



## 2-Stage Filter/Silencer

- **Use:** High Dust and Debris Environments
- **1st Stage** – Dual Panel Filter @ 10 Micron
- **2nd Stage** – Cartridge Filter rated to 1,100 CFM @ 2 Micron
- Dual Control Filter Gauge
- Powder Coated CRS
- Optional Pressure Switch
- Optional Metal Mesh Panels for Oil Vapors



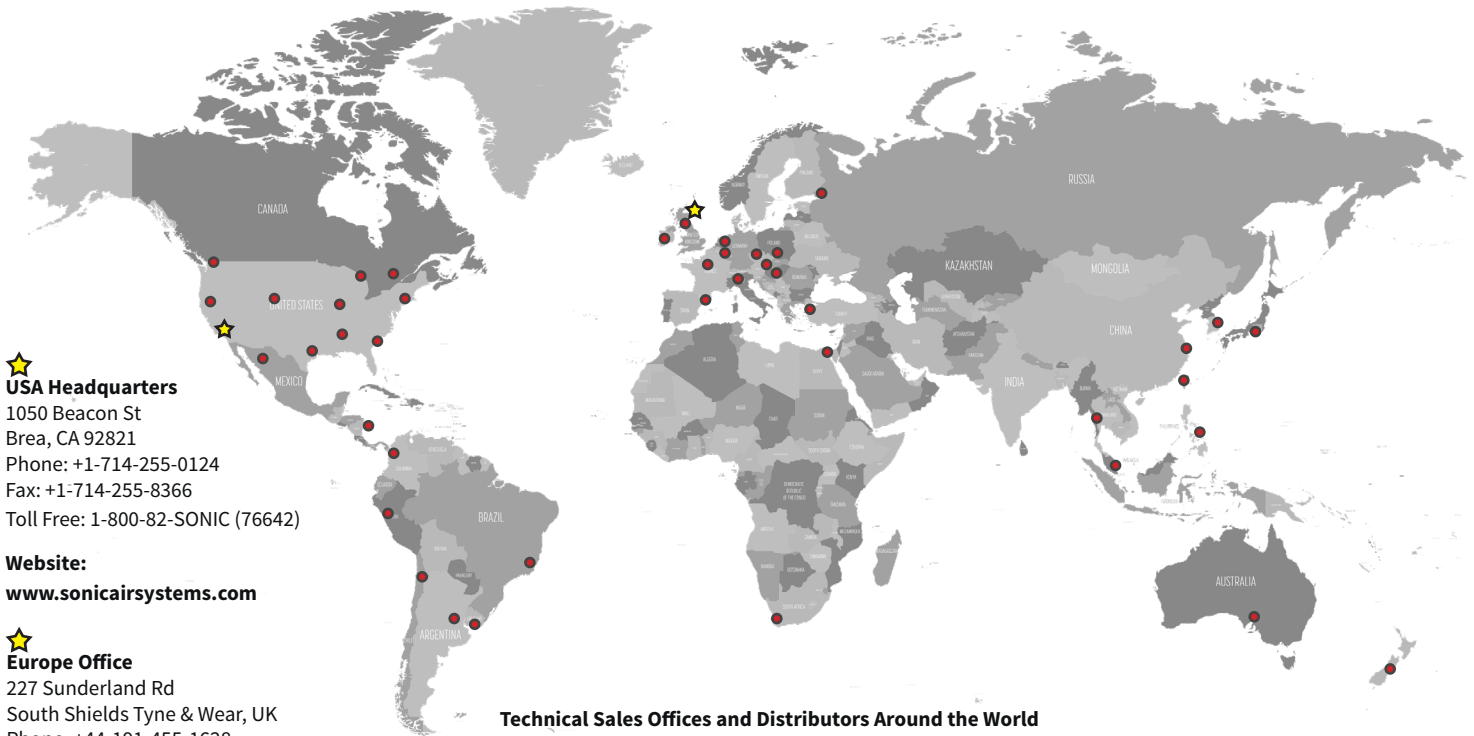
## COOL AIR – After Cooler

- **Flow Rate:** 100 – 1100 CFM (2.83 CMM – 31.14 CMM)
- **Discharge Air Temp:** 10 – 15° F (5.5 – 8.3° C) above the cooling water inlet temperature
- **Material:** Stainless Steel Case w/Aluminum Cones
- Optional: Nickel Plating
- Fluid Connection: 1" MNPT Pipe Threads





# Global Offices



★  
**USA Headquarters**  
 1050 Beacon St  
 Brea, CA 92821  
 Phone: +1-714-255-0124  
 Fax: +1-714-255-8366  
 Toll Free: 1-800-82-SONIC (76642)

**Website:**  
[www.sonicairsystems.com](http://www.sonicairsystems.com)

★  
**Europe Office**  
 227 Sunderland Rd  
 South Shields Tyne & Wear, UK  
 Phone: +44-191-455-1628

Technical Sales Offices and Distributors Around the World

**Email:**  
[asksonic@sonicairsystems.com](mailto:asksonic@sonicairsystems.com)

## Provided Engineered Air Solutions Around the World for:

Abbott Laboratories  
 AmBev  
 Arcelor Mittal  
 Benchmark Electronics  
 Bimbo Bakeries  
 Boston Beer Co  
 Bridgestone Firestone  
 Certainteed Corp  
 China Steel Aluminum Corp  
 Coca Cola  
 CommScope Cable  
 Danone Foods  
 Diageo  
 Dominos Pizza  
 Dr Pepper Snapple Group  
 Essilor of America  
 EJ Gallo

First Solar  
 Ford Motor Co  
 Foxxconn  
 Frito Lay  
 GAF Corp  
 General Motors  
 Givaudan  
 Grupo Jumex  
 Grupo Modelo  
 Hershey  
 Honda of North America  
 Innoprint Chile  
 Jabil Circuits  
 James Hardie Industries  
 JP Steel Plantech  
 Kellogg's  
 KHS

Kirwan Surgical  
 Kraft Foods  
 Kroger Foods  
 Kumho Tire  
 Leprino Cheese  
 Louisiana Pacific  
 Magna Corp  
 Marine Spill Response Corp  
 Michelin Tire  
 Miller Coors  
 Mission Produce  
 Mondelez  
 Nestle  
 Nippon Steel  
 NLMK  
 Norbord  
 The Okonite Company

Penhall Co  
 Pepsi Bottling  
 Refresco  
 St Mary's Cement  
 Steel Dynamics  
 Thyssenkrupp Steel  
 Timken Bearings  
 Titleist  
 Transitions Optical  
 US Steel  
 Vascular Technologies  
 Waupaca Foundries  
 Weyerhaeuser  
 Whirlpool  
 Yokohama Tire  
 Zekelman Industries  
 Zeon Chemicals